



INDIANA GEOGRAPHIC
INFORMATION OFFICE



Finding and Accessing Statewide GIS

Sharon Scholer & Dan Council
Indiana Geographic Information
Office

MEET THE



Enterprise and Infrastructure



Steve Aldrich
Ph.D.



Derek Fuller



Sandeep Barre



Caitlin Pennington



Megan Compton
GIO



Marianne Cardwell
PMP, GISP, IAM



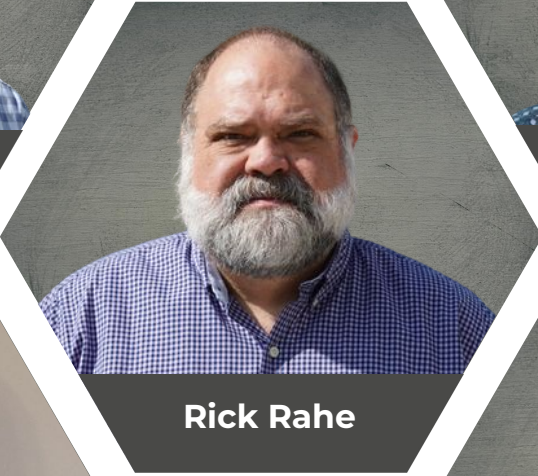
Shaun Scholer
GISP



Ben Grubbs



Karen Arnold



Rick Rahe



Dan Council

Programs and Outreach



Matt Evans



Pamela Walton

ENTERPRISE

- **Data and User Governance**
- **Lifecycle Management**
- **Software and Licensing Management**
- **User Management**
- **Agency Support**
- **Infrastructure**
- **Training**

OUTREACH

- **K-12 and Higher Education**
- **National Coordination**
- **Professional Associations**
- **Local Governments**
- **Private Industry**
- **Advocacy**

PROGRAMS

- **Data Harvest**
- **IndianaMap**
- **Elevation**
- **Imagery**
- **GIS Day**

What is IndianaMap?

- Indiana's open data platform for spatial data
- Fully migrated from IGWS
- Collection of web services
- Platform for users to explore and interact with GIS

IndianaMap

Indiana's Geospatial Open Data Portal

 Search for data

What is IndianaMap?

A collection of authoritative data and web services

An organized effort of partners throughout Indiana, involving local, state, and federal agencies, private sector and academia

What can I do with IndianaMap?

Search, browse, and download data

Do basic geoprocessing and analysis tasks

Reuse IndianaMap data and tools within other applications

Create a free IndianaMap Community AGOL account, gaining access to tools such as Experience Builder and Story Maps

GIS




INDIANA GEOGRAPHIC
INFORMATION OFFICE

Data Categories



**463 items
and growing!**



**INDIANA GEOGRAPHIC
INFORMATION OFFICE**
GIS DATA HARVEST PROGRAM

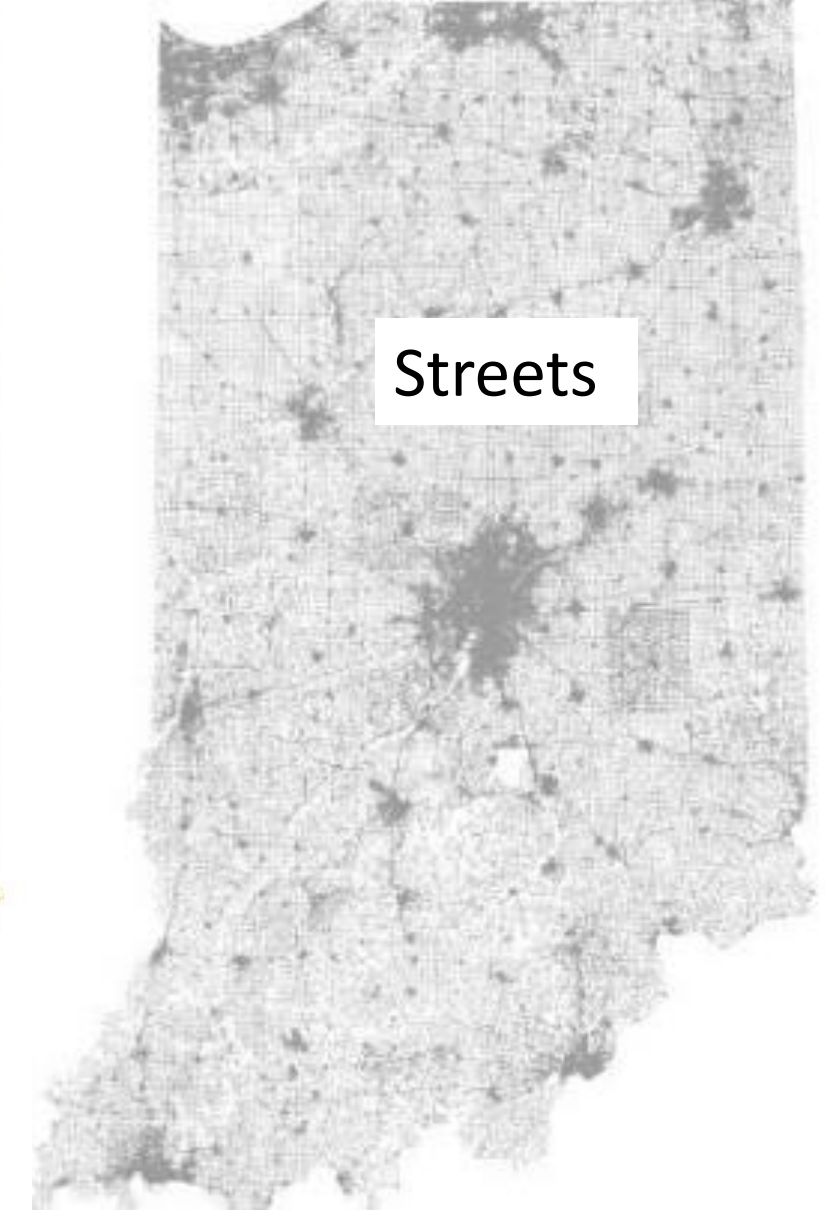
- Administrative boundaries
- Addresses
- Parcels
- Streets

INDIANA DATA HARVEST

- Collection of parcel, street, address and administrative boundaries for all 92 counties.
- Data harvest started in 2008 with a handful of counties and by 2018 all 92 counties contributing.

2023 Data Harvest by the numbers:

- 550,953 street centerlines
- 3,291,399 address points
- 3,657,068 parcels
- 11,911 boundaries

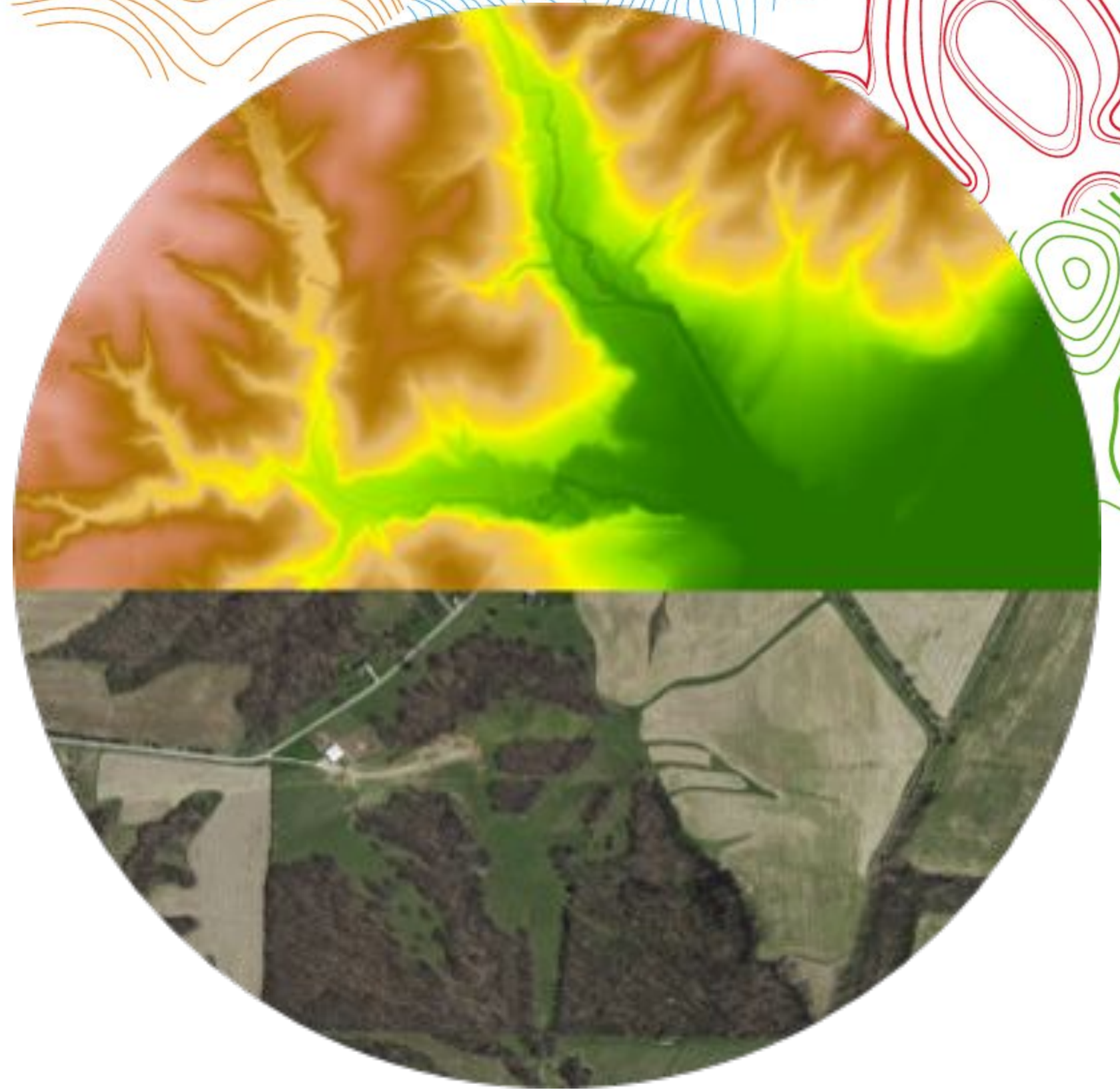


<https://data-harvest-ingov.hub.arcgis.com/>



INDIANA GEOGRAPHIC INFORMATION OFFICE

IMAGERY & ELEVATION PROGRAMS



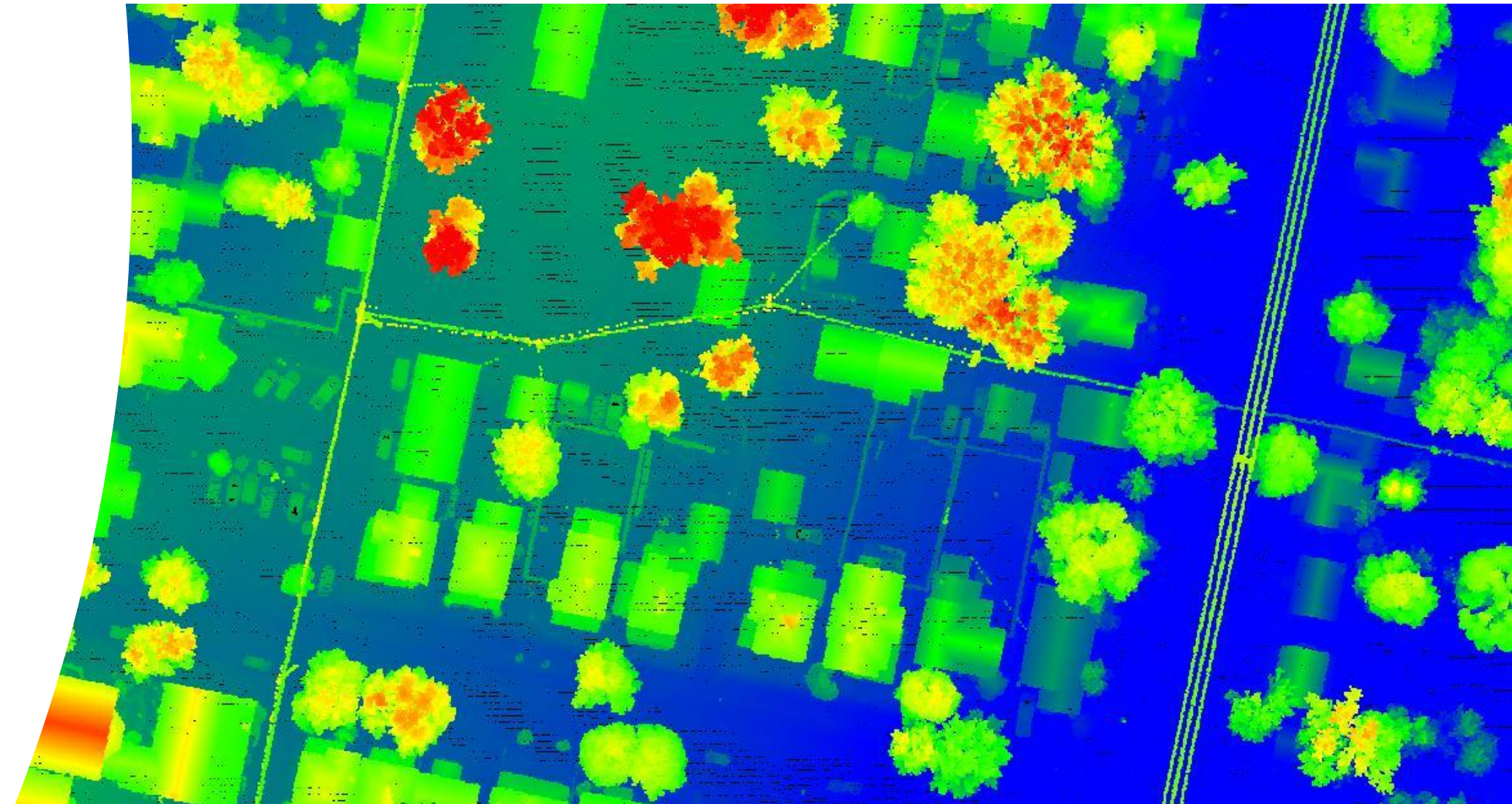
2025 - 2028 Statewide Program - Specifications

- **Orthoimagery Base Products**

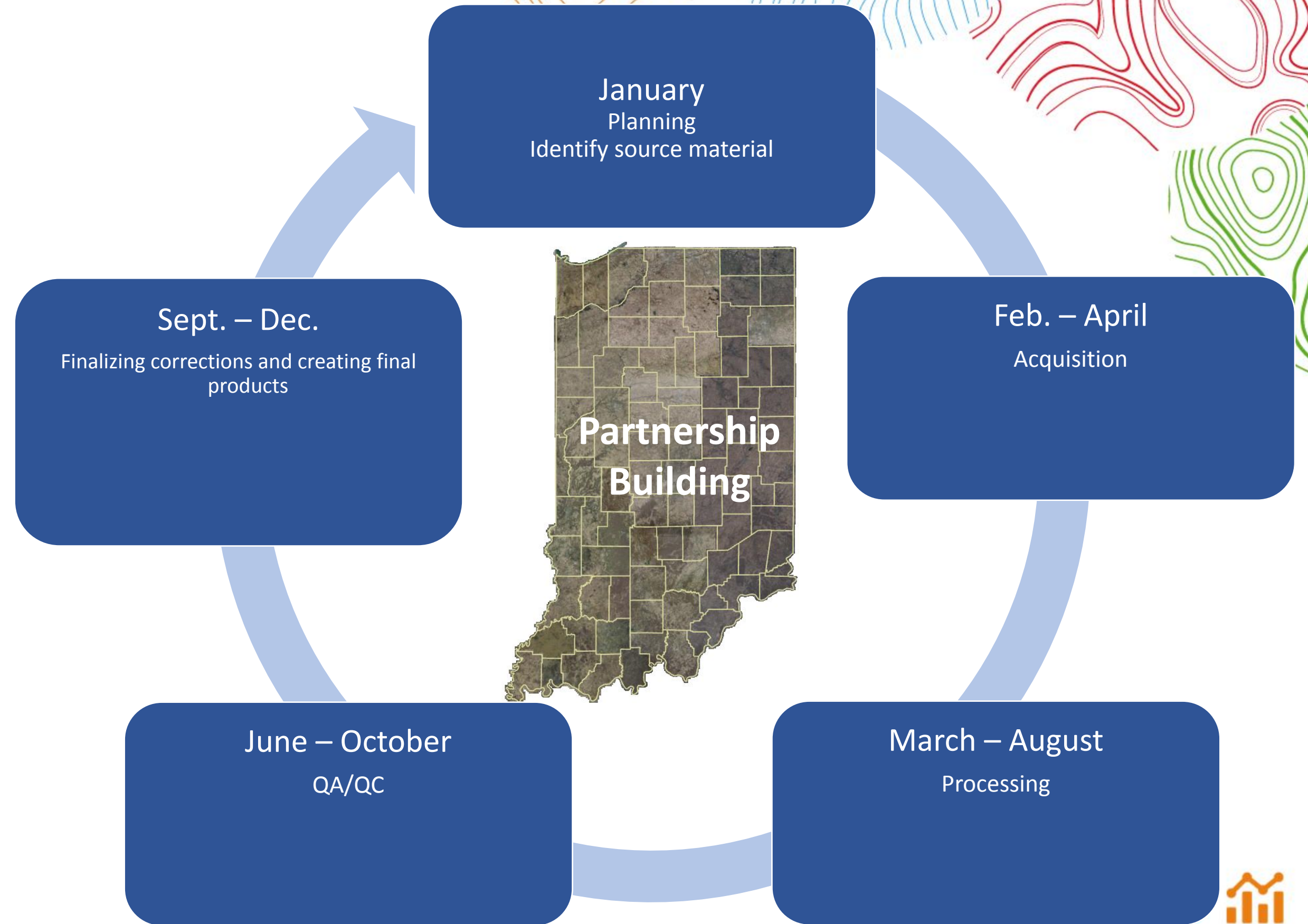
- 6-inch (15-cm) pixel resolution
- Tile 4 -Band (R,G,B, NIR) imagery

- **Lidar Base Products**

- QL1, 8 vertical cm accuracy at 25 ppsm



Timeline



Indiana Program History

Orthoimagery

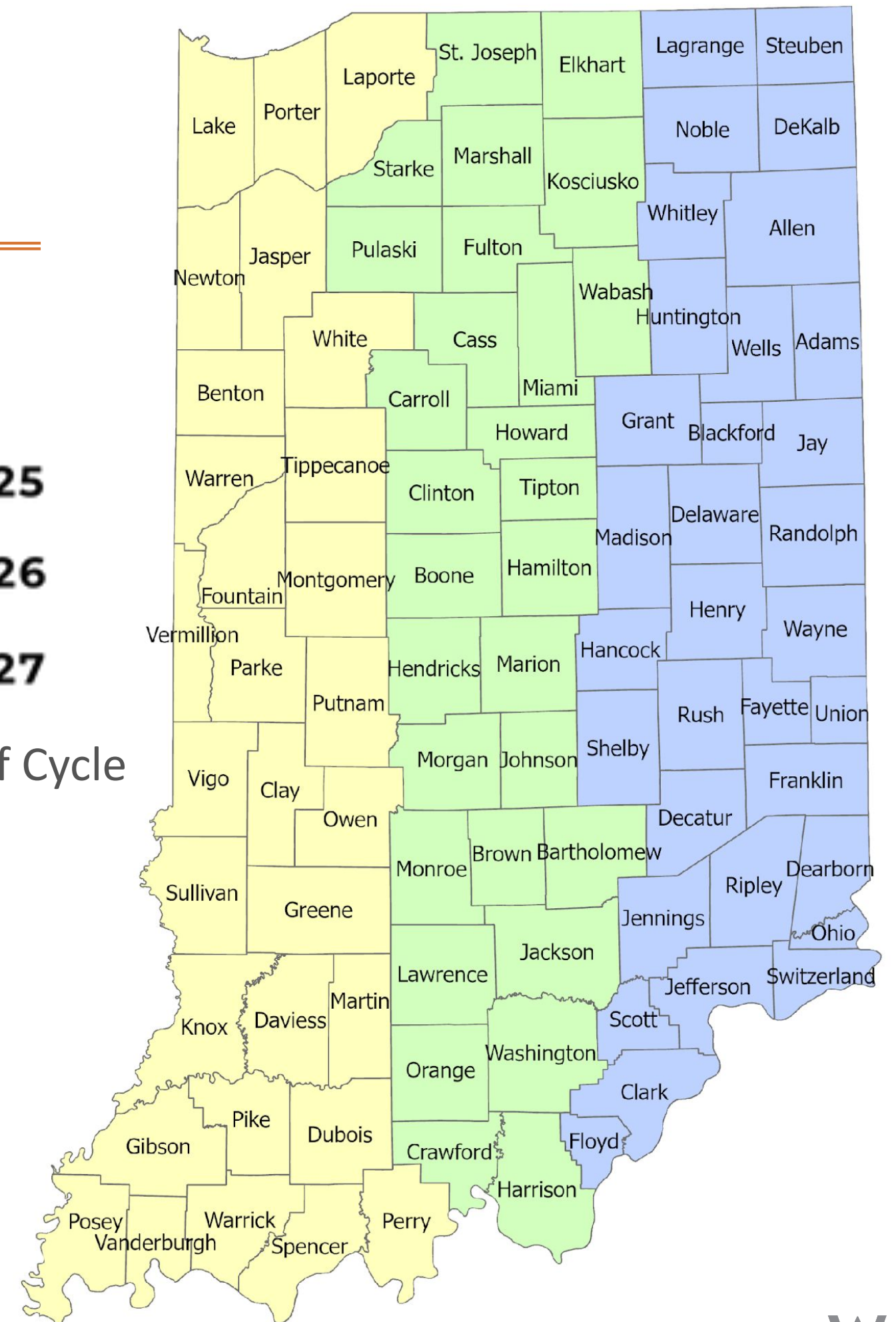
- 2005-2006
- 2011-2015
- 2016-2019
- 2021-2024
- 2025-2028

Lidar

- 2011-2013
- 2016-2019
- 2025-2028



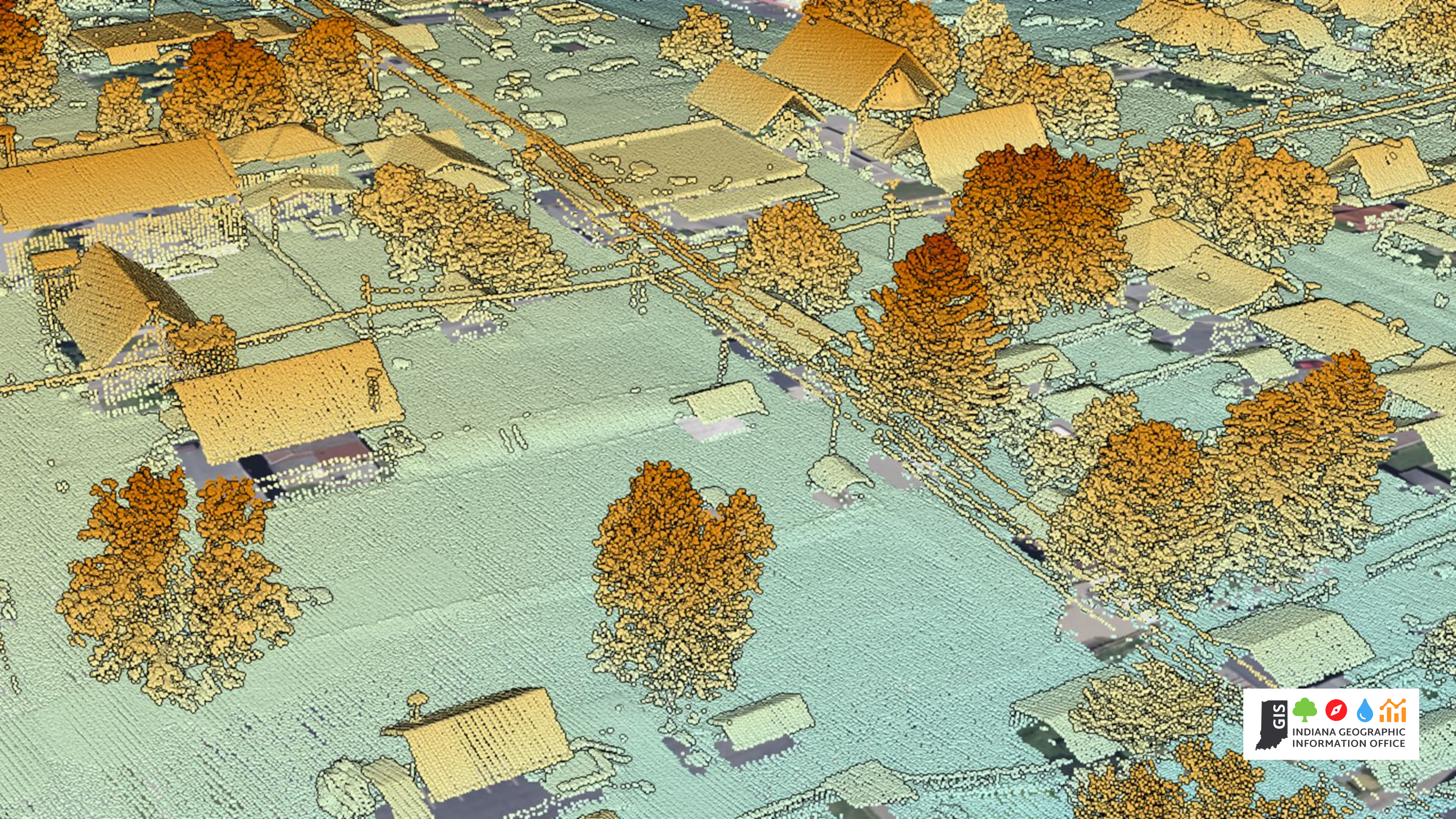
2028 Out of Cycle Buy up




Benefits of Simultaneous Collection

- Improved QA/QC
- Enhanced accuracy of derivative products
- Co-registered, colorized point cloud makes a beautiful 3D point cloud






Services on IndianaMap



Elevation



Imagery, Basemaps, Earth Cover

IN.gov Home

< Info I want to...

- Create a Map: Start a map with this data
- Create a Story: Open in ArcGIS StoryMaps
- View API Resources: Try out the API Explorer
- View Data Source: Select to open in a new tab
- Open in ArcGIS Online: Select to open in a new tab

Map labels: Davenport, Green River, Illinois, Aurora, Joliet, Peoria, Normal, Bloomington, Champaign, Springfield, Decatur, St. Louis, St. Peter, Mt. Vernon, Park Hills, Lexington, Frankfort, Cincinnati, Dayton, Springfield, Sidney, Macon, Oxford, Lexington, Reed River, Salt River, Licking River, Grand Lake, 1170 ft, 1542 ft, 256 ft, 251 ft, 1427 ft, 1006 ft.

Footer: Esri, HERE, Garmin, FAO, USGS, EPA, NPS | Access to Indiana Geographic Information Office Orthoimagery is governed by Creative Commons 0 (CC0)

Services from REST Catalog

ArcGIS REST Services Directory

[Login](#) | [Get Token](#)

[Home](#) > [services](#) > [DynamicWebMercator](#) > [Indiana Current Imagery \(ImageServer\)](#)

[Help](#) | [API Reference](#)

[JSON](#) | [SOAP](#) | [WMS](#)

DynamicWebMercator/Indiana_Current_Imagery (ImageServer)

View In: [ArcGIS JavaScript](#) [ArcGIS Online Map Viewer](#) [ArcGIS Earth](#) [ArcMap](#)

View Footprint In: [ArcGIS Online Map Viewer](#)

Service Description: State of Indiana Current Orthophotography includes the years 2021 to 2023. The Indiana Orthoimagery Program collects and produces 4-band, 6-inch orthoimagery (with some areas at 3-inch resolution) on a 3-year cycle. Approximately one-third of the state is flown to develop streaming imagery services, 2,500' by 2,500' tiles. The dynamic imagery services contain color infrared and NDVI raster functions built into the services. Access to Indiana Geographic Information Office Orthoimagery is governed by Creative Commons 0 (CC0)

Name: DynamicWebMercator/Indiana_Current_Imagery

Description: State of Indiana Current Orthophotography includes the years 2021 to 2023. The Indiana Orthoimagery Program collects and produces 4-band, 6-inch orthoimagery (with some areas at 3-inch resolution) on a 3-year cycle. Approximately one-third of the state is flown to develop streaming imagery services, 2,500' by 2,500' tiles. The dynamic imagery services contain color infrared and NDVI raster functions built into the services. Access to Indiana Geographic Information Office Orthoimagery is governed by Creative Commons 0 (CC0)

Single Fused Map Cache: false

Extent:

XMin: -9814545.286
YMin: 4545966.593499517
XMax: -9428601.343912115
YMax: 5133016.834799999
Spatial Reference: 102100 (3857)

Resources

Imagery Resource Page - <https://imagery.gio.in.gov/>

Elevation Resource Page - <https://elevation.gio.in.gov/>

Orthoimagery and Elevation DEM rest services
<https://di-ingov.img.arcgis.com/arcgis/rest/services/>

Indiana Data Harvest
<https://dataharvest.gio.in.gov/>

IndianaMap:
<https://www.indianamap.org/>

<https://www.youtube.com/channel/UCRZRTzzMsnO1r0ypA5SVShw>

QGIS Orthoimagery and Elevation DEM Mosaic Plugins
https://plugins.qgis.org/plugins/indiana_ortho/#plugin-details

and
https://plugins.qgis.org/plugins/indiana_lidar/#plugin-details

Shaun Scholer

GIS Program Director
sscholer@iot.in.gov

Dan Council

GIS Outreach
dcouncil@iot.in.gov

Upcoming Events

GIS day

Wednesday, November 20th

Registration is Open



STAY IN TOUCH



<https://www.in.gov/gis>



gissupport@iot.in.gov



INDIANA GEOGRAPHIC
INFORMATION OFFICE
GEOINSIGHTS

